

# P\*P-3660-3P 1 2 Floor Unit Assembly Instructions

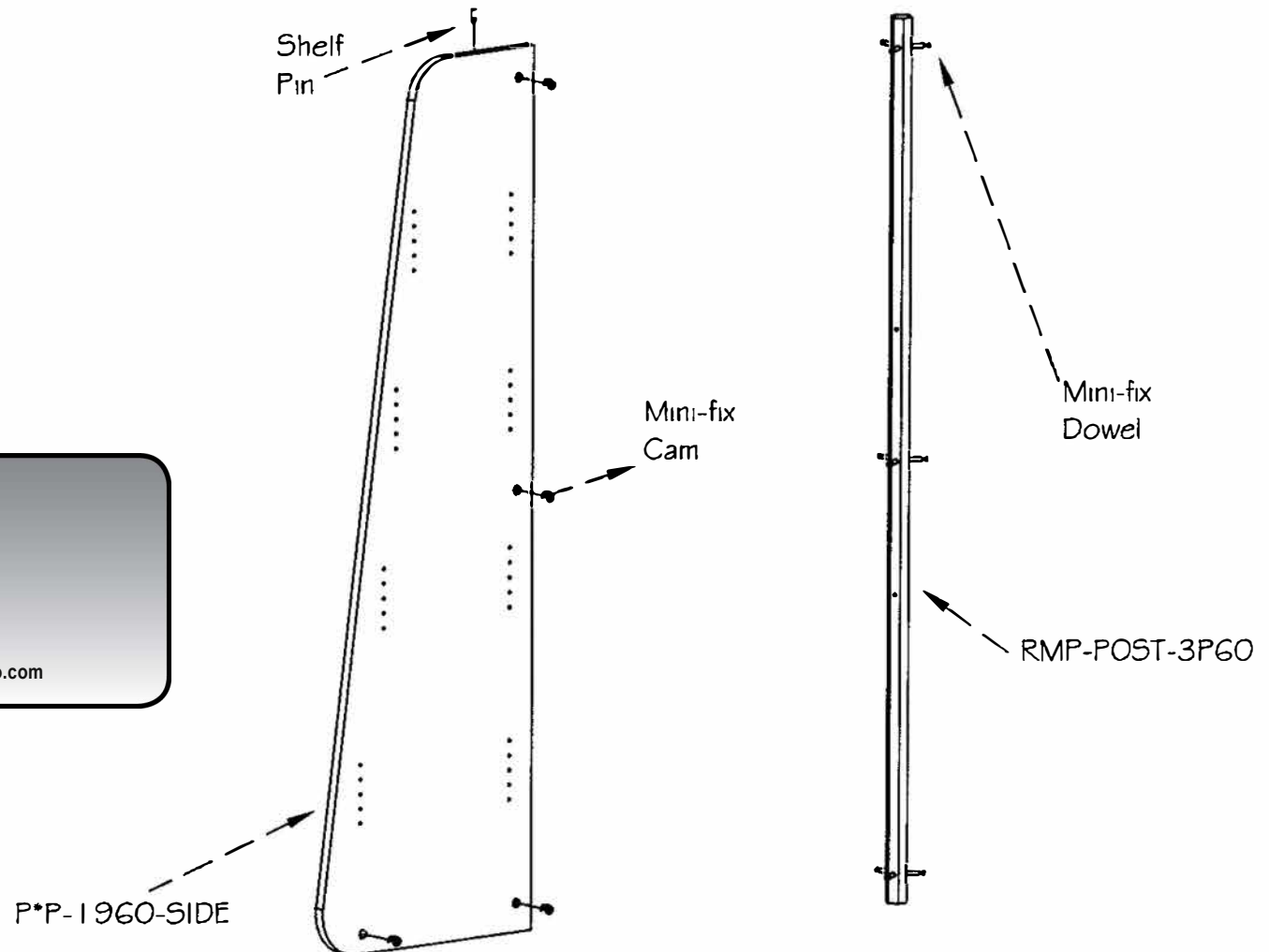
Step 1. Install (9) Mini-fix Dowels in the RMP-POST3P60 as shown and install the Mini-fix Cams in the (3) P\*P-1960-SIDE Panels as shown; install a Cam in the front bottom Cam hole only if the unit will use a rotating base option. (SEE TYPICAL MINI-FIX CONNECTIONS INSTRUCTIONS)

Step 2. Install (1) Shelf Pin in the Top of each Side panel, as shown, if the optional Top will be used.

  
Mini-fix  
Cam

  
Mini-fix  
Dowel

  
Shelf  
Pin



  
demco®  
imagine what's possible™

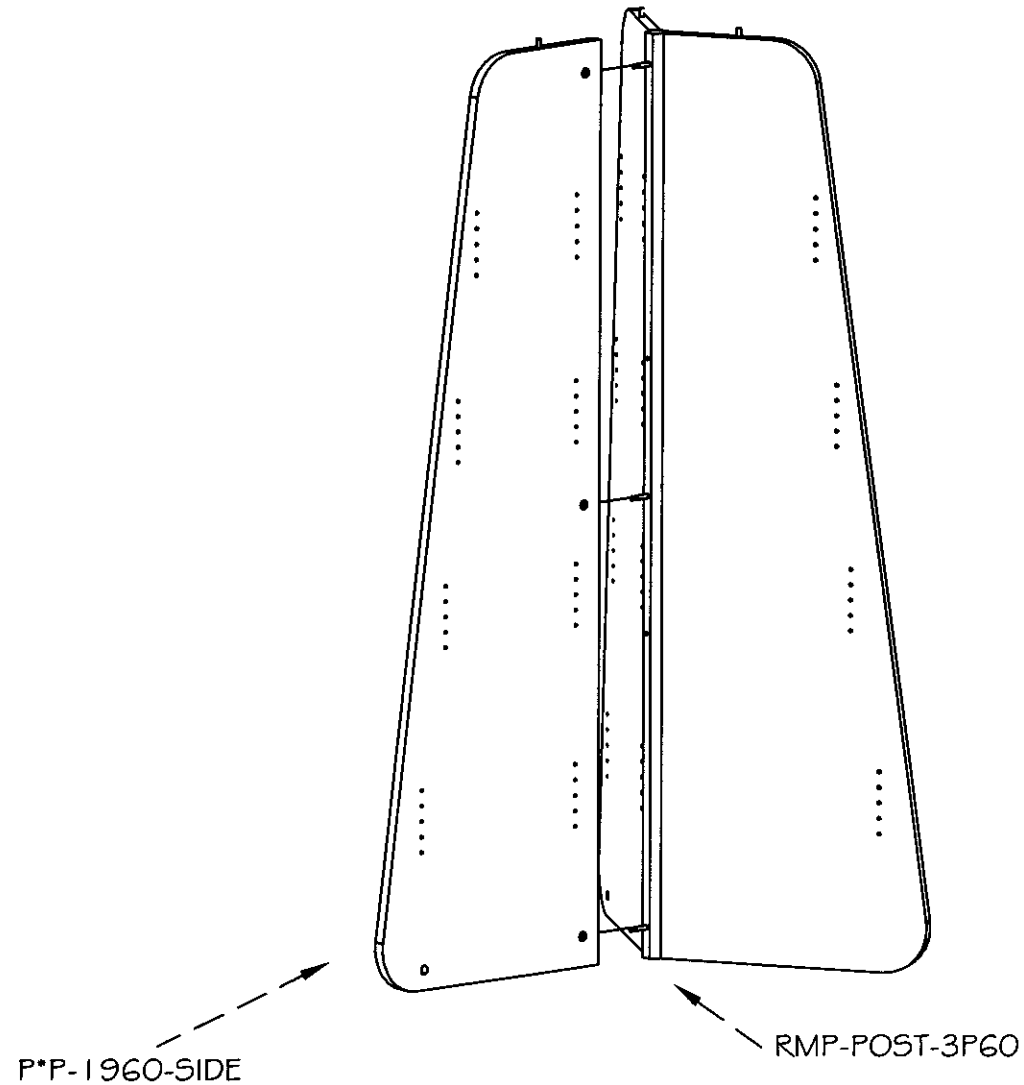
Find Mobile Pyramid Display @demco.com,  
search **mobile pyramid display**

Call 800.962.4463 or email [custserv@demco.com](mailto:custserv@demco.com)

DRAWING: PYRAMID.DWG	
DATE: 08-22-01	
REV:	DRAWN BY: BEN
SUB: PYRAMID ASSY INSTRUCTIONS	

# P\*P-3660-3P1 2 Floor Unit Assembly Instructions

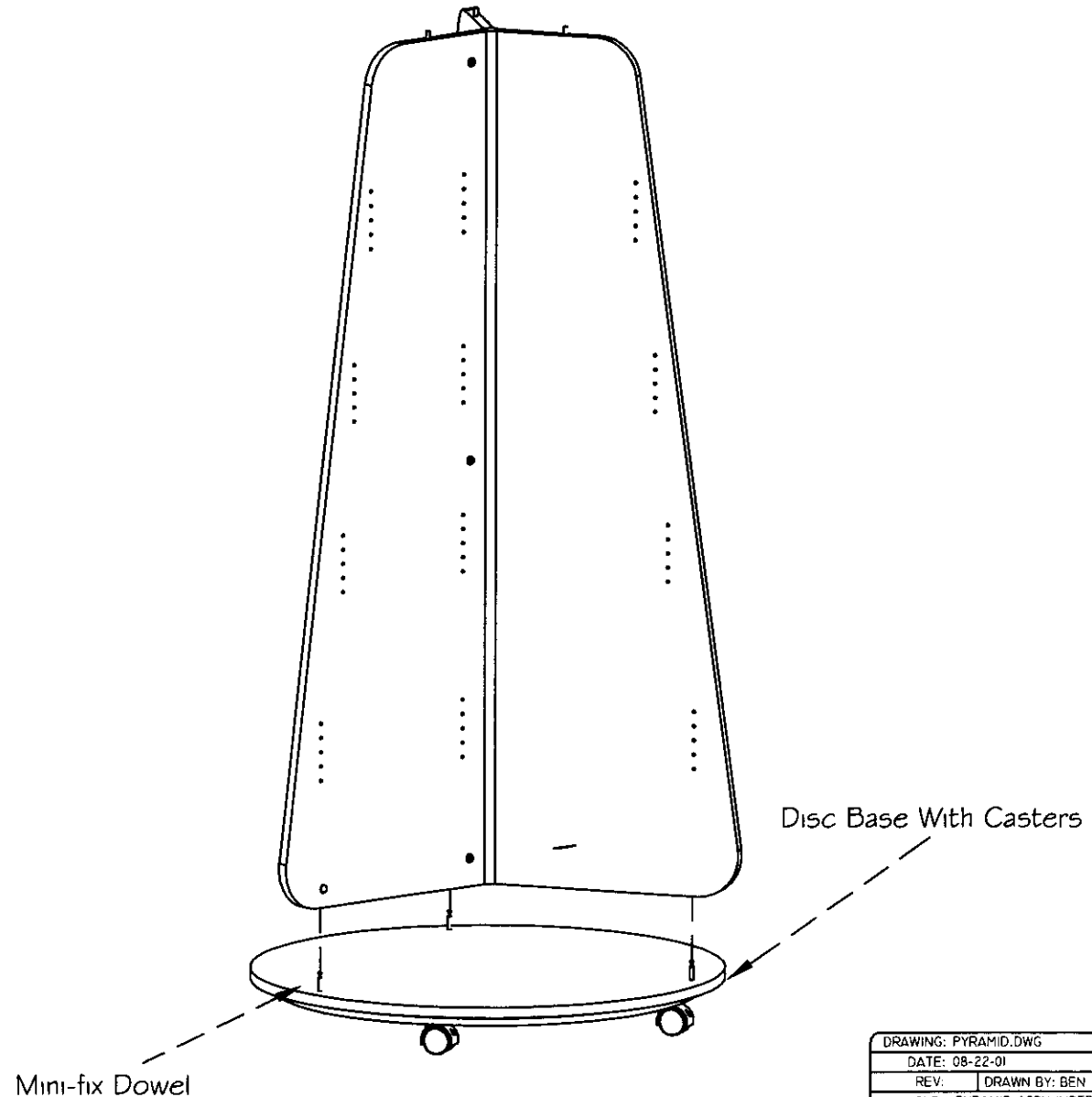
Step 3. Attach the (3) Sides to the Post as shown using the Mini-fix Connections. (SEE TYPICAL MINI-FIX CONNECTIONS INSTRUCTIONS)



DRAWING: PYRAMID.DWG	
DATE: 08-22-01	
REV:	DRAWN BY: BEN
SUB: PYRAMID ASSY INSTRUCTIONS	

# P\*P-3660-3P 1 2 Floor Unit Assembly Instructions

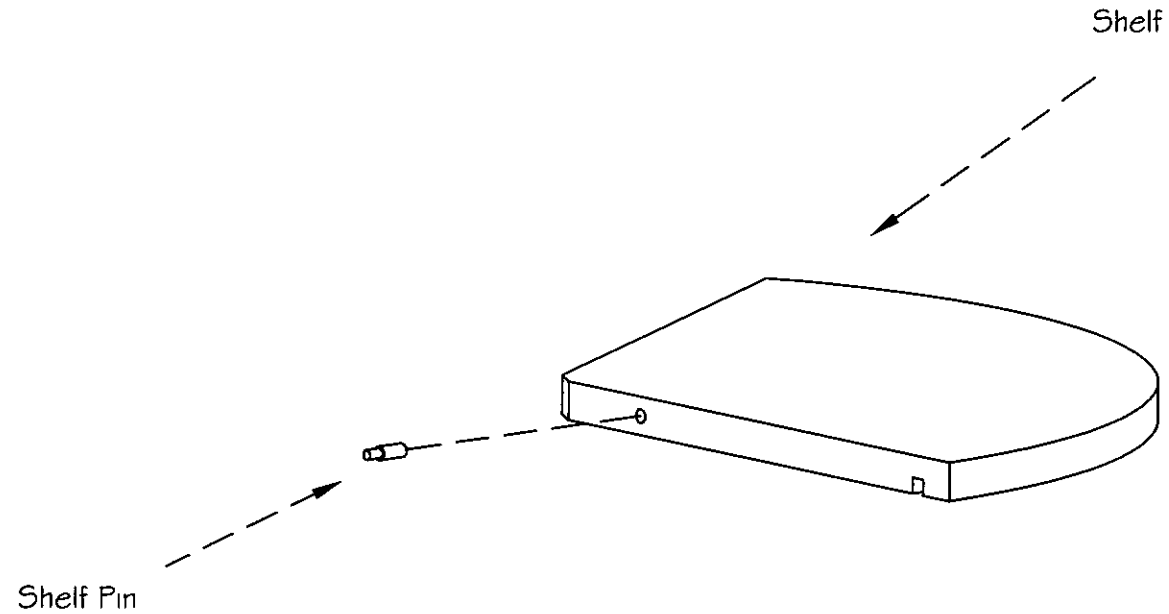
Step 4. IF a rotating Disc Base is being used install Mini-fix Dowels in the Top of the Base as shown and set the assembled sides on the Base and secure in place using the Mini-fix Connections. (SEE TYPICAL MINI-FIX CONNECTIONS INSTRUCTIONS)



DRAWING: PYRAMID.DWG	
DATE: 08-22-01	
REV:	DRAWN BY: BEN
SUB: PYRAMID ASSY INSTRUCTIONS	

# P\*P-3660-3P1 2 Floor Unit Assembly Instructions

Step 5. To prepare shelves for installation insert a Shelf Pin in the pin hole in the edge of the Shelf as shown.

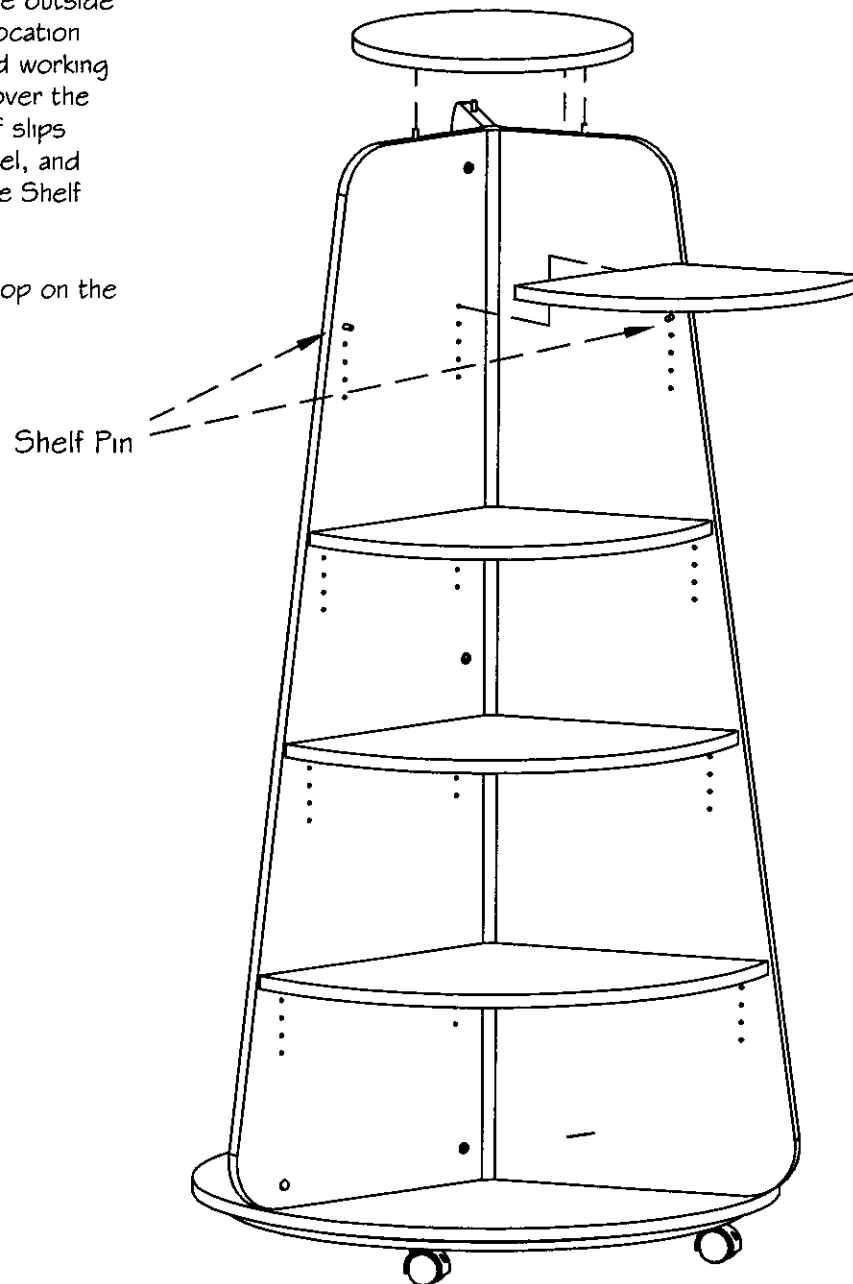


DRAWING: PYRAMID.DWG	
DATE: 08-22-01	
REV: 1	DRAWN BY: BEN
SUB: PYRAMID ASSY INSTRUCTIONS	

# P\*P-3660-3P | 2 Floor Unit Assembly Instructions

Step 6. To install the shelves insert Shelf Pins in the outside row of pin holes in the Side panels at the desired location for each Shelf. Starting with the largest shelves and working up install each level of shelves by sliding the Shelf over the installed Shelf pins so that the Shelf Pin in the Shelf slips into the pin hole at the inside edge of the Side panel, and the pin slots in the bottom of the Shelf slip over the Shelf Pins in the outside edges of the Side panels.

Step 7. IF the optional Top is being used set the Top on the unit as shown.



DRAWING: PYRAMID.DWG	
DATE: 08-22-01	
REV:	DRAWN BY: BEN
SUB: PYRAMID ASSY INSTRUCTIONS	