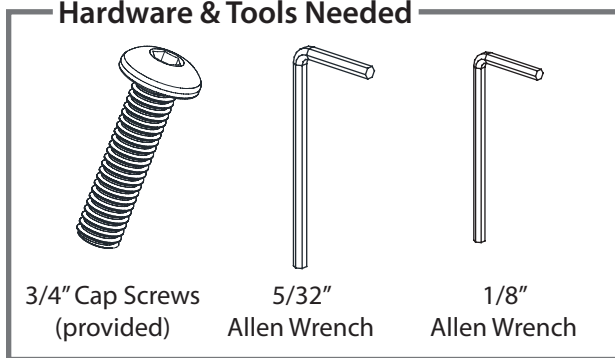


Palette - Engage Table Assembly

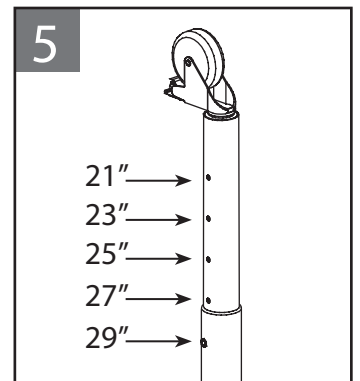
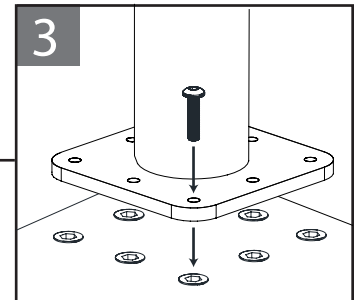
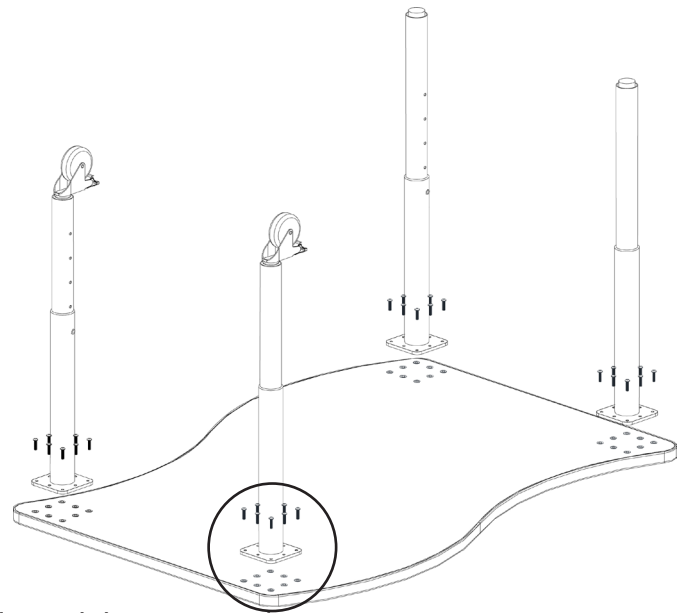


Hardware & Tools Needed



Assembly Instructions

- 1 Lay table top laminate side down on carpet, cardboard, or some other padded, clean smooth material that will not scratch the top.
- 2 You will see groupings of metal inserts, the legs will attach here. Position the leg plate over a grouping of inserts and rotate/move the leg until the holes in the leg plate match with the inserts. If there are just two legs that have casters be sure that these two legs are placed adjacent to each other. Turn the legs so that the height adjustment holes face inward.
- 3 Hand thread the provided cap screws through the holes in the leg plate and into the table inserts. Thread all screws in one plate before tightening any in that plate. You may have to jiggle/rotate the leg & plate to get all screws to fit. After all the screws have been threaded and turned at least 3 full revolutions (to ensure it is not cross-threaded), use a 1/8" Allen wrench or 1/8" Hex bit to tighten the screws.
Tighten securely, but do not overtightened.
- 4 Complete steps #2 & #3 for all table legs.
- 5 Using a 5/32" Allen wrench, loosen the set screw until the bottom leg tube can be adjusted. Adjust to the desired table height and then tighten the set screw back into the leg hole. Make sure to adjust each leg to the same height before turning the table right side up.
- 6 With a helper, turn the table right side up. If the table has no casters, use 2 people to fully pick up the table and move into position. ** Do not drag the leveler legs across the floor.
** When rolling tables with casters, make sure the caster brakes are unlocked before moving. Once the table is in place you may use the levelers and caster brakes as needed. Set the breaks if desired.



Demco
imagine what's possible™

Find Engage Tables @demco.com,
search **engage tables**

Call 800.962.4463 or email custserv@demco.com