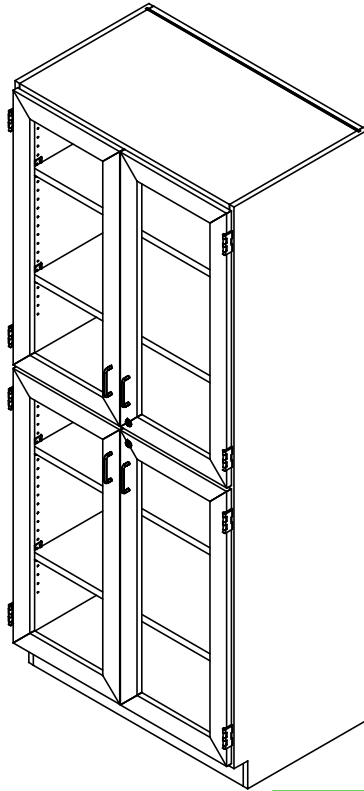


TALL STORAGE CABINETS

S- SERIES (84"H), TC- SERIES, L84- SERIES, TETC- SERIES, TTC- SERIES, WSC- SERIES, DBC- SERIES, PSC- SERIES, DTC- SERIES, GSC- SERIES, & OS- SERIES
 ASSEMBLY INSTRUCTIONS



NOTE:

1. MODEL VIEWS MAY NOT REPRESENT EXACT MODEL PURCHASED

| | | | | |
|---|---------|-----|-----------|---------|
| ALL DIMENSIONS ARE IN INCHES UNLESS NOTED OTHERWISE | DWN BY: | EMR | DATE DWN: | 11/3/16 |
| DECIMALS: X = ± .020 | APR BY: | | DATE APR: | |
| XX = ± .020 | APR BY: | | DATE APR: | |
| XXX = ± .010 | APR BY: | | DATE APR: | |
| ANGLES: = ± 1° | APR BY: | | DATE APR: | |
| CABINET SQUARENESS = ± .0625 | APR BY: | | DATE APR: | |



CONFIDENTIAL:
 ALL DESIGN RIGHTS RESERVED
 THE INFORMATION, DATA, DESIGN, AND DRAWINGS EMBODIED IN THIS DOCUMENT AND ALL REPRODUCTIONS THEREOF ARE THE EXCLUSIVE PROPERTY OF DIVERSIFIED WOODCRAFTS, INC.

TITLE:
 TALL STORAGE CABINETS
 ASSEMBLY INSTRUCTIONS

THESE DOCUMENTS ARE SUPPLIED WITH THE UNDERSTANDING THAT THEY WILL NOT BE DISCLOSED TO THIRD PARTIES WITHOUT WRITTEN CONSENT OF DIVERSIFIED WOODCRAFTS, INC. ANY REPRODUCTION IN PART OR WHOLE WITHOUT WRITTEN CONSENT IS SUBJECT TO LEGAL ACTION.

| | | | |
|-----------------------|--------|--------|-----------|
| DRAWING NUMBER: | SCALE: | SHEET: | REVISION: |
| TALL STORAGE CABINETS | NTS | 1 OF 7 | REV A |

| REV. | DESCRIPTION | DATE | NAME | ECN NO. |
|----------------|-------------------------------|---------|------|---------|
| A | CREATED ASSEMBLY INSTRUCTIONS | 11/3/16 | EMR | - |
| REVISION LEVEL | | | | |

TOOLS REQUIRED

CONTACT CEMENT

SCREW DRIVER

ASSEMBLY COMPONENTS

| ITEMS INCLUDED | PART # | PART DESCRIPTION | QTY |
|---|---------|------------------------------------|--------|
| RUBBER BASE MOLDING | 100283 | RUBBER BASE MOLDING (SOLD BY FOOT) | VARIES |
| STAINLESS STEEL CORNERS | 100057 | CORNERS-STAINLESS STEEL,BASE | 2 |
| SCREWS - BASE | 100064 | SCREW,#6X 1/2 PTH SMS SS SCREW | 8 |
| SHELF CLIPS | 100027 | SHELF CLIPS,PLASTIC,5MM PIN | VARIES |
| PLASTIC BINS - PSC-SERIES | 15-0038 | HANG BINS,7.37X4.125X3 | 80 |
| TOTE TRAYS - 350-XXYY, 351-XXYY, TTC-SERIES, DTC-SERIES, & GSC-SERIES | 100135 | TOTE TRAYS, T-188 | VARIES |
| TOTE TRAYS - L84-SERIES | 15-0084 | TOTE TRAY - 9X19X4-3/8H | 6 |
| TOTE TRAYS - L84-SERIES | 15-0081 | TOTE TRAY - 13.5X19X4.25H | 8 |
| MICROSCOPE DIVIDERS - 370-XXYY, 372-XXYY, & 373-XXYY SERIES | 100995 | MICROSCOPE DIVIDER,ZINC | VARIES |



Find Diversified Spaces Tool Cabinet @demco.com, search **diversified tool cabinet**

Call **800.962.4463** or email **custserv@demco.com**

NOTE:

- COMPONENTS VARY WITH STYLE OF TALL STORAGE UNIT PURCHASED.

| | | | | |
|---|---------|-----|-----------|---------|
| ALL DIMENSIONS ARE IN INCHES UNLESS NOTED OTHERWISE | DWN BY: | EMR | DATE DWN: | 11/3/16 |
| DECIMALS: X = ± .030 XX = ± .020 XXX = ± .010 | APR BY: | | DATE APR: | |
| ANGLES: = ± 1° CABINET SQUARENESS = ± .0625 | APR BY: | | DATE APR: | |

CONFIDENTIAL:
ALL DESIGN RIGHTS RESERVED
THE INFORMATION, DATA, DESIGN, AND DRAWINGS EMBODIED IN THIS DOCUMENT AND ALL REPRODUCTIONS THEREOF ARE THE EXCLUSIVE PROPERTY OF DIVERSIFIED WOODCRAFTS, INC.

THESE DOCUMENTS ARE SUPPLIED WITH THE UNDERSTANDING THAT THEY WILL NOT BE DISCLOSED TO THIRD PARTIES WITHOUT WRITTEN CONSENT OF DIVERSIFIED WOODCRAFTS, INC. ANY REPRODUCTION IN PART OR WHOLE WITHOUT WRITTEN CONSENT IS SUBJECT TO LEGAL ACTION.

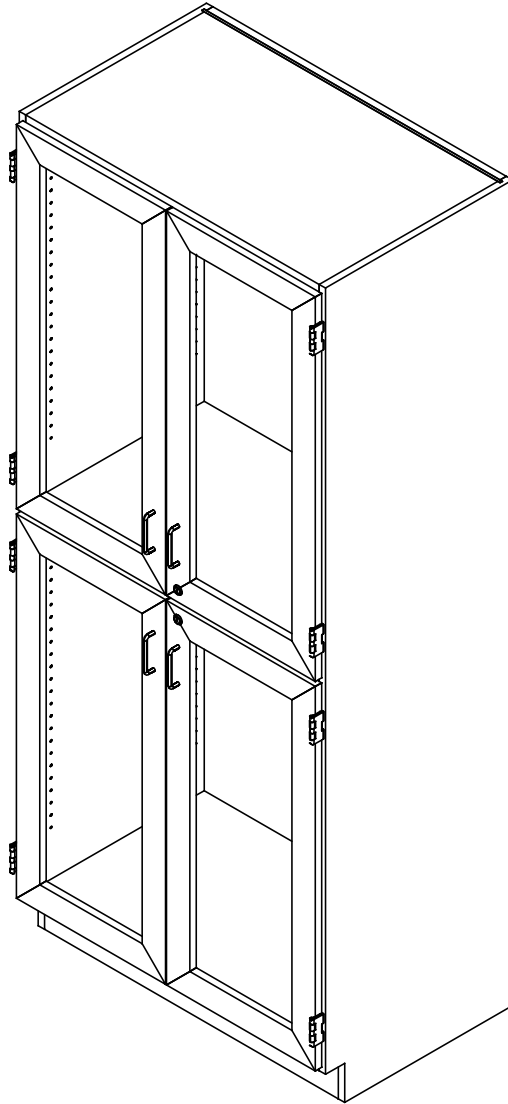


TITLE:
TALL STORAGE CABINETS
TOOLS AND ASSEMBLY COMPONENTS

| REV. | DESCRIPTION | DATE | NAME | ECN NO. |
|------|-------------------------------|---------|------|---------|
| A | CREATED ASSEMBLY INSTRUCTIONS | 11/3/16 | EMR | - |

REVISION LEVEL

| | | | |
|-----------------------|--------|--------|-----------|
| DRAWING NUMBER: | SCALE: | SHEET: | REVISION: |
| TALL STORAGE CABINETS | NTS | 2 OF 7 | REV A |



STEP 1:

- POSITION CABINET IN YOUR DESIRED LOCATION.
- LEVEL CABINET.
- ANCHOR TO WALL AS CABINET WILL BE TOP HEAVY.

****NOTE****
CABINET MUST BE LEVELED OR
DOORS AND DRAWERS MAY NOT
OPEN OR CLOSE CORRECTLY

NOTE:

1.

| | | | | |
|---|---------|-----|-----------|---------|
| ALL DIMENSIONS ARE IN INCHES UNLESS NOTED OTHERWISE | DWN BY: | EMR | DATE DWN: | 11/3/16 |
| DECIMALS: X = ± .030 | APR BY: | | DATE APR: | |
| XX = ± .020 | APR BY: | | DATE APR: | |
| XXX = ± .010 | APR BY: | | DATE APR: | |
| ANGLES: = ± 1° | APR BY: | | DATE APR: | |
| CABINET SQUARENESS: = ± .0625 | APR BY: | | DATE APR: | |

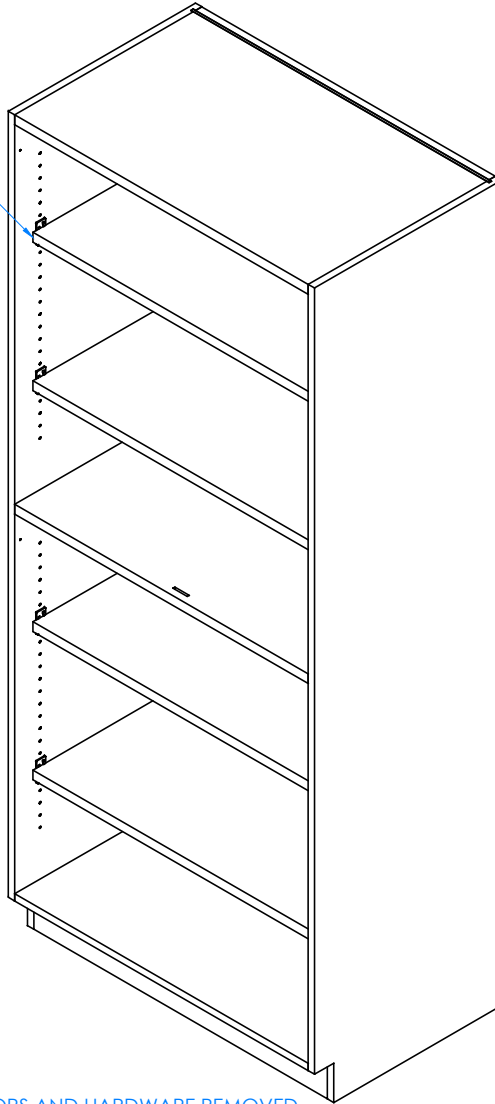
CONFIDENTIAL:
 ALL DESIGN RIGHTS RESERVED
 THE INFORMATION, DATA, DESIGN, AND DRAWINGS EMBODIED IN THIS DOCUMENT AND ALL REPRODUCTIONS THEREOF ARE THE EXCLUSIVE PROPERTY OF DIVERSIFIED WOODCRAFTS, INC.

THESE DOCUMENTS ARE SUPPLIED WITH THE UNDERSTANDING THAT THEY WILL NOT BE DISCLOSED TO THIRD PARTIES WITHOUT WRITTEN CONSENT OF DIVERSIFIED WOODCRAFTS, INC. ANY REPRODUCTION IN PART OR WHOLE WITHOUT WRITTEN CONSENT IS SUBJECT TO LEGAL ACTION.

| | | |
|--|--------|--------------|
| | | |
| TITLE: TALL STORAGE CABINETS ASSEMBLY INSTRUCTIONS | | |
| DRAWING NUMBER: | SCALE: | REVISION: |
| TALL STORAGE CABINETS | NTS | 3 OF 7 REV A |

| REV. | DESCRIPTION | DATE | NAME | ECN NO. |
|----------------|-------------------------------|---------|------|---------|
| A | CREATED ASSEMBLY INSTRUCTIONS | 11/3/16 | EMR | - |
| REVISION LEVEL | | | | |

ADJUSTABLE
SHELVES - TYPICAL



DOORS AND HARDWARE REMOVED
TO SHOW CLARITY

NOTE:

1.

STEP 2:

- INSERT SHELF CLIPS IN DESIRED LOCATION.
- PLACE SHELVES ON CLIPS, MAKING SURE THEY ARE LEVEL.

| | | | | |
|---|---------|-----|-----------|---------|
| ALL DIMENSIONS ARE IN INCHES UNLESS NOTED OTHERWISE | DWN BY: | EMR | DATE DWN: | 11/3/16 |
| DECIMALS: X = ± .030 XX = ± .020 XXX = ± .010 | APR BY: | | DATE APR: | |
| ANGLES: = ± 1° | APR BY: | | DATE APR: | |
| CABINET SQUARENESS: = ± .0625 | | | | |

CONFIDENTIAL:
ALL DESIGN RIGHTS RESERVED
THE INFORMATION, DATA, DESIGN, AND DRAWINGS EMBODIED IN THIS DOCUMENT AND ALL REPRODUCTIONS THEREOF ARE THE EXCLUSIVE PROPERTY OF DIVERSIFIED WOODCRAFTS, INC.

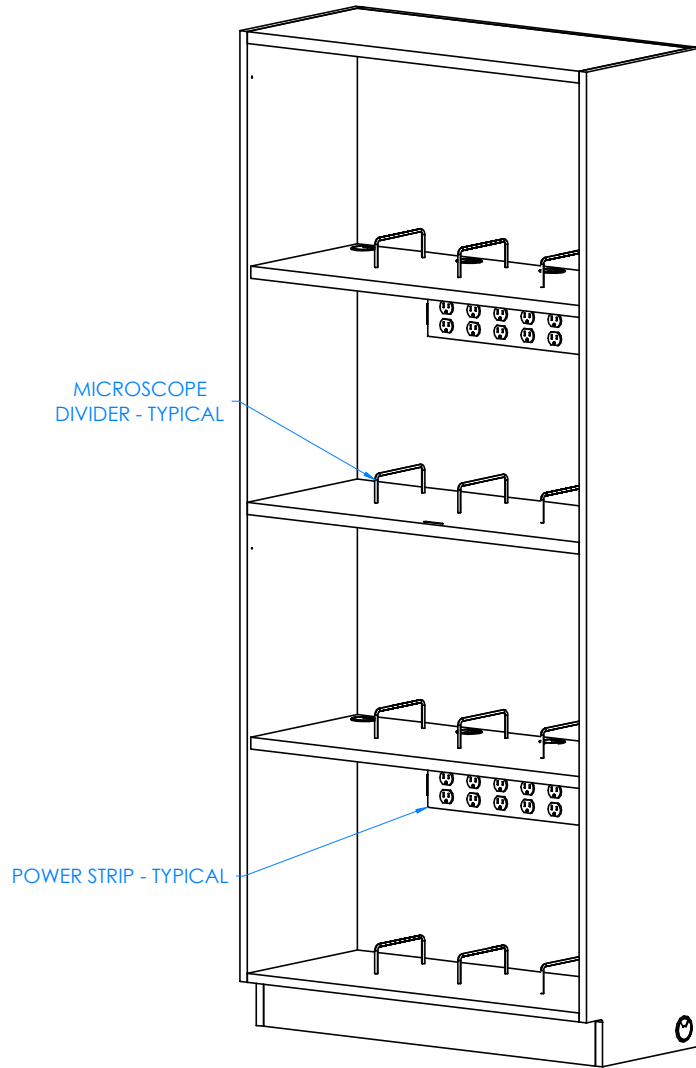
THESE DOCUMENTS ARE SUPPLIED WITH THE UNDERSTANDING THAT THEY WILL NOT BE DISCLOSED TO THIRD PARTIES WITHOUT WRITTEN CONSENT OF DIVERSIFIED WOODCRAFTS, INC. ANY REPRODUCTION IN PART OR WHOLE WITHOUT WRITTEN CONSENT IS SUBJECT TO LEGAL ACTION.



TITLE:
TALL STORAGE CABINETS
ASSEMBLY INSTRUCTIONS

| REV. | DESCRIPTION | DATE | NAME | ECN NO. |
|----------------|-------------------------------|---------|------|---------|
| A | CREATED ASSEMBLY INSTRUCTIONS | 11/3/16 | EMR | - |
| REVISION LEVEL | | | | |

| | | | |
|-----------------------|--------|--------|-----------|
| DRAWING NUMBER: | SCALE: | SHEET: | REVISION: |
| TALL STORAGE CABINETS | NTS | 4 OF 7 | REV A |



NOTE:

1.

MICROSCOPE CABINET SHOWN
DOORS AND HARDWARE REMOVED TO SHOW CLARITY

STEP 3:

- IF YOU DO NOT HAVE A MICROSCOPE CABINET (370-XXYY, 372-XXYY, OR 373-XXYY), SKIP TO STEP 5.
- ATTACH MICROSCOPE DIVIDERS TO SHELVES.
- PLUG IN POWER STRIP TO OUTLET.

| | | | | |
|---|---------|-----|-----------|---------|
| ALL DIMENSIONS ARE IN INCHES UNLESS NOTED OTHERWISE | DWN BY: | EMR | DATE DWN: | 11/3/16 |
| DECIMALS: $\frac{1}{16}$ = ± .030 | APR BY: | | DATE APR: | |
| XX = ± .020 | APR BY: | | DATE APR: | |
| .XXX = ± .010 | APR BY: | | DATE APR: | |
| ANGLES: = ± 1° | APR BY: | | DATE APR: | |
| CABINET SQUARENESS: = ± .0625 | APR BY: | | DATE APR: | |



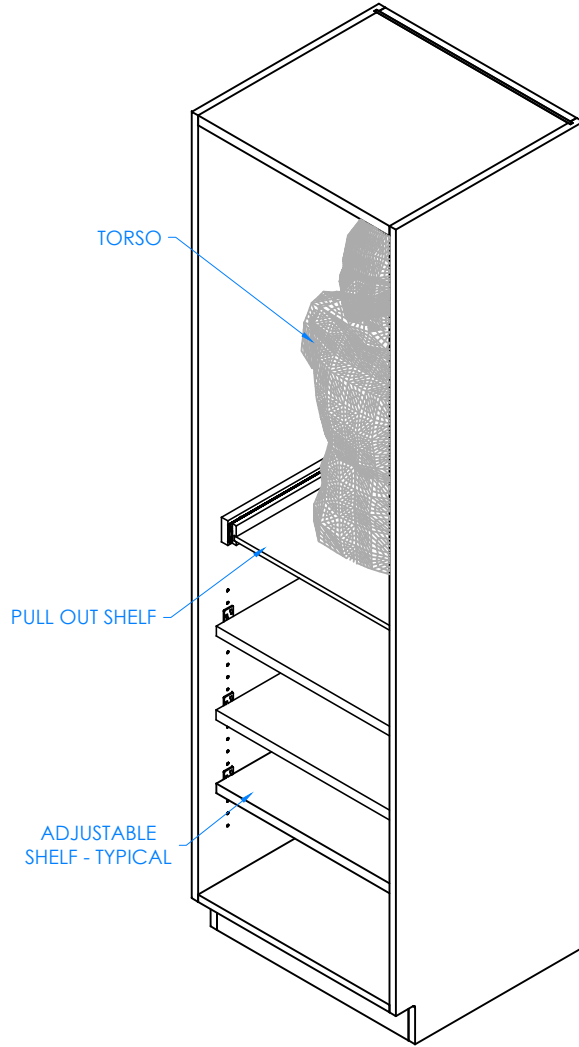
CONFIDENTIAL:
ALL DESIGN RIGHTS RESERVED
THE INFORMATION, DATA, DESIGN, AND DRAWINGS EMBODIED IN THIS DOCUMENT AND ALL REPRODUCTIONS THEREOF ARE THE EXCLUSIVE PROPERTY OF DIVERSIFIED WOODCRAFTS, INC.

TITLE:
TALL STORAGE CABINETS
ASSEMBLY INSTRUCTIONS

THESE DOCUMENTS ARE SUPPLIED WITH THE UNDERSTANDING THAT THEY WILL NOT BE DISCLOSED TO THIRD PARTIES WITHOUT WRITTEN CONSENT OF DIVERSIFIED WOODCRAFTS, INC. ANY REPRODUCTION IN PART OR WHOLE WITHOUT WRITTEN CONSENT IS SUBJECT TO LEGAL ACTION.

| | | | |
|-----------------------|--------|--------|-----------|
| DRAWING NUMBER: | SCALE: | SHEET: | REVISION: |
| TALL STORAGE CABINETS | NTS | 5 OF 7 | REV A |

| REV. | DESCRIPTION | DATE | NAME | ECN NO. |
|----------------|-------------------------------|---------|------|---------|
| A | CREATED ASSEMBLY INSTRUCTIONS | 11/3/16 | EMR | - |
| REVISION LEVEL | | | | |



TORSO CABINET SHOWN
DOORS AND HARDWARE REMOVED TO SHOW CLARITY

NOTE:

1.

STEP 4:

- IF YOU DO NOT HAVE A TORSO CABINET (374-2422), SKIP TO STEP 5.
- PLACE TORSO ONTO PULL OUT SHELF.
- MAKE SURE TORSO IS STABLE!

| | | | | |
|---|---------|-----|-----------|---------|
| ALL DIMENSIONS ARE IN INCHES UNLESS NOTED OTHERWISE | DWN BY: | EMR | DATE DWN: | 11/3/16 |
| DECIMALS: $X = \pm .030$ | APR BY: | | DATE APR: | |
| $XX = \pm .020$ | APR BY: | | DATE APR: | |
| $XXX = \pm .010$ | APR BY: | | DATE APR: | |
| ANGLES: $= \pm 1^{\circ}$ | APR BY: | | DATE APR: | |
| CABINET SQUARENESS: $= \pm .0625$ | APR BY: | | DATE APR: | |



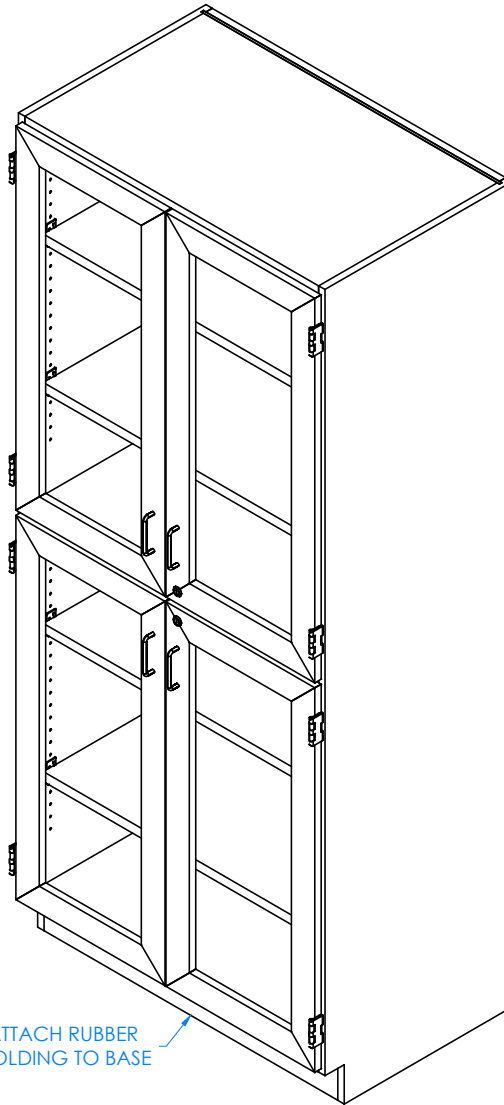
CONFIDENTIAL:
ALL DESIGN RIGHTS RESERVED
THE INFORMATION, DATA, DESIGN, AND DRAWINGS EMBODIED IN THIS DOCUMENT AND ALL REPRODUCTIONS THEREOF ARE THE EXCLUSIVE PROPERTY OF DIVERSIFIED WOODCRAFTS, INC.

TITLE:
TALL STORAGE CABINETS
ASSEMBLY INSTRUCTIONS

THESE DOCUMENTS ARE SUPPLIED WITH THE UNDERSTANDING THAT THEY WILL NOT BE DISCLOSED TO THIRD PARTIES WITHOUT WRITTEN CONSENT OF DIVERSIFIED WOODCRAFTS, INC. ANY REPRODUCTION IN PART OR WHOLE WITHOUT WRITTEN CONSENT IS SUBJECT TO LEGAL ACTION.

| | | | |
|-----------------------|--------|--------|-----------|
| DRAWING NUMBER: | SCALE: | SHEET: | REVISION: |
| TALL STORAGE CABINETS | NTS | 6 OF 7 | REV A |

| REV. | DESCRIPTION | DATE | NAME | ECN NO. |
|----------------|-------------------------------|---------|------|---------|
| A | CREATED ASSEMBLY INSTRUCTIONS | 11/3/16 | EMR | - |
| REVISION LEVEL | | | | |



ATTACH RUBBER MOLDING TO BASE

NOTE:

1.

STEP 5:

- ATTACH RUBBER MOLDING TO BASE OF CABINET USING CONTACT CEMENT.
- SCREW STAINLESS STEEL CORNER BRACKETS ON EACH CORNER OVER BASE MOLDING WITH HARDWARE PROVIDED.
- IF YOUR UNIT HAS TOTE TRAYS OR PLASTIC BINS, PLACE THEM IN DESIRED LOCATION.

COMPLETE UNIT SHOWN

| | | | | |
|---|---------|-----|-----------|---------|
| ALL DIMENSIONS ARE IN INCHES UNLESS NOTED OTHERWISE DECIMALS: X = ± .030 XX = ± .020 XXX = ± .010 ANGLES: = ± 1° CABINET SQUARENESS: = ± .0625 | DWN BY: | EMR | DATE DWN: | 11/3/16 |
| | APR BY: | | DATE APR: | |
| | APR BY: | | DATE APR: | |
| | APR BY: | | DATE APR: | |

CONFIDENTIAL:
ALL DESIGN RIGHTS RESERVED
THE INFORMATION, DATA, DESIGN, AND DRAWINGS EMBODIED IN THIS DOCUMENT AND ALL REPRODUCTIONS THEREOF ARE THE EXCLUSIVE PROPERTY OF DIVERSIFIED WOODCRAFTS, INC.

THESE DOCUMENTS ARE SUPPLIED WITH THE UNDERSTANDING THAT THEY WILL NOT BE DISCLOSED TO THIRD PARTIES WITHOUT WRITTEN CONSENT OF DIVERSIFIED WOODCRAFTS, INC. ANY REPRODUCTION IN PART OR WHOLE WITHOUT WRITTEN CONSENT IS SUBJECT TO LEGAL ACTION.

| | | |
|--|--------|--------------|
| | | |
| TITLE: TALL STORAGE CABINETS ASSEMBLY INSTRUCTIONS | | |
| DRAWING NUMBER: | SCALE: | REVISION: |
| TALL STORAGE CABINETS | NTS | 7 OF 7 REV A |

| REV. | DESCRIPTION | DATE | NAME | ECN NO. |
|----------------|-------------------------------|---------|------|---------|
| A | CREATED ASSEMBLY INSTRUCTIONS | 11/3/16 | EMR | - |
| REVISION LEVEL | | | | |