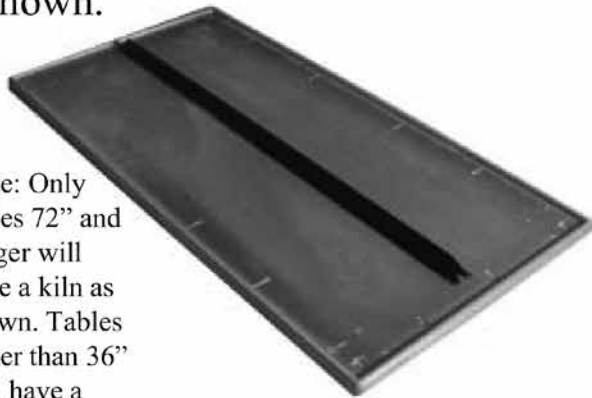


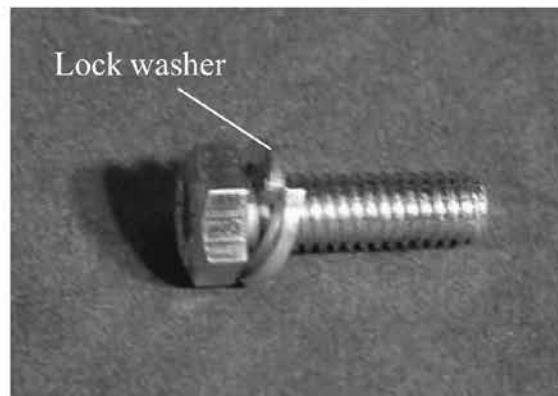
Assembly Instructions for all tables with legs

1. *Two people* lay the table top on a carpeted or equivalent surface as shown.

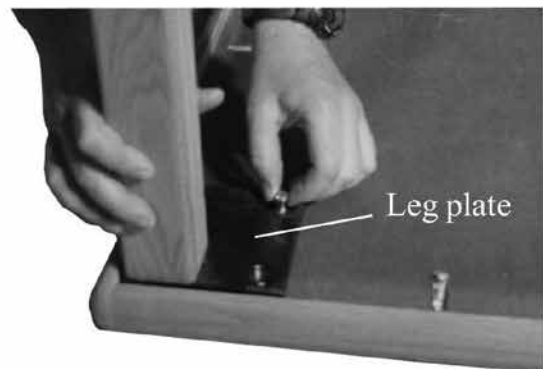


Note: Only tables 72" and longer will have a kiln as shown. Tables wider than 36" will have a fifth leg.

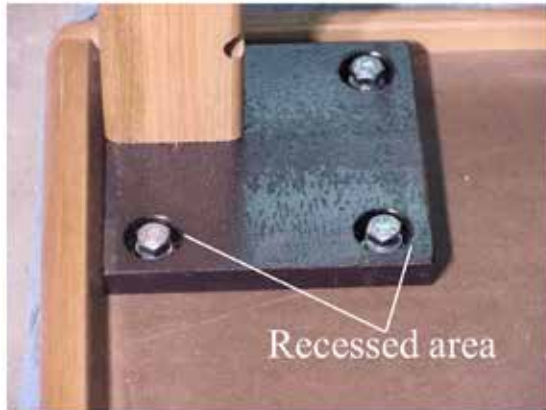
2. Remove the leg assembly from the box and place in each corner as shown.



3. Each leg plate will have 3 heavy duty bolts. Each bolt will have 1 lock washer. Place lock washer on bolt as shown. *Check each bolt hole in table top and remove any trash collected during shipping.*



4. To maintain warranty, each bolt must be hand tightened first to avoid crossthreading with a wrench or power tool.



5. Hand tighten each bolt on each leg plate until each bolt head is level with the recessed area.

Note: Recessed bolt heads are a safety feature preventing tampering and accidental cuts due to exposed sharp edges on the bolt head.



6. Using a 1/2" socket wrench slowly tighten each bolt until the lock washer has "flattened out" but is not "spreading out" from underneath the bolt head. The head of a fully tightened bolt will not rise above the recessed area of the leg plate.



7. After each bolt on each leg plate has been properly tightened - two people should carefully lift with their legs and turn the table upright. Level as necessary and enjoy!

Demco[®]

Find Demco Libra Craft Library Tables @demco.com,
search **libra craft**

Call 800.962.4463 or email custserv@demco.com