

**STEP 1**

Place panel (A) and panel (B) in position as shown. Connect (A) and (B) with two bolts provided. Hand tighten bolts.

**STEP 2**

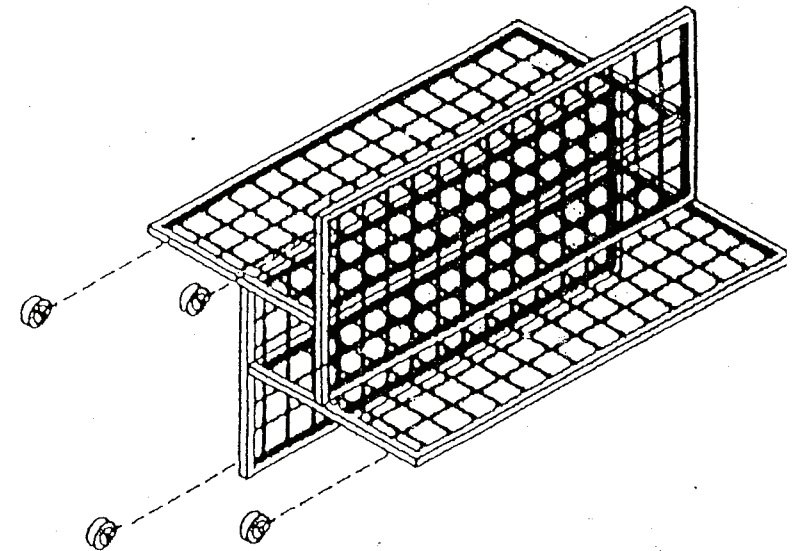
Place panel (C) in position as shown. Connect (C) to (A). Hand tighten bolts.

**STEP 3**

Place panel (D) in position as shown. Connect (D) to (C) first, then to panel (A).

**STEP 4**

Tighten all bolts with wrench provided. DO NOT OVER TIGHTEN !



**STEP 5**

Lay 3715 on it's side as shown; insert locking casters with washers through holes in bottom of panels (A), (B), (C), & (D). Place 2nd washer over stem, then thread nuts onto locking casters and tighten with wrench provided.